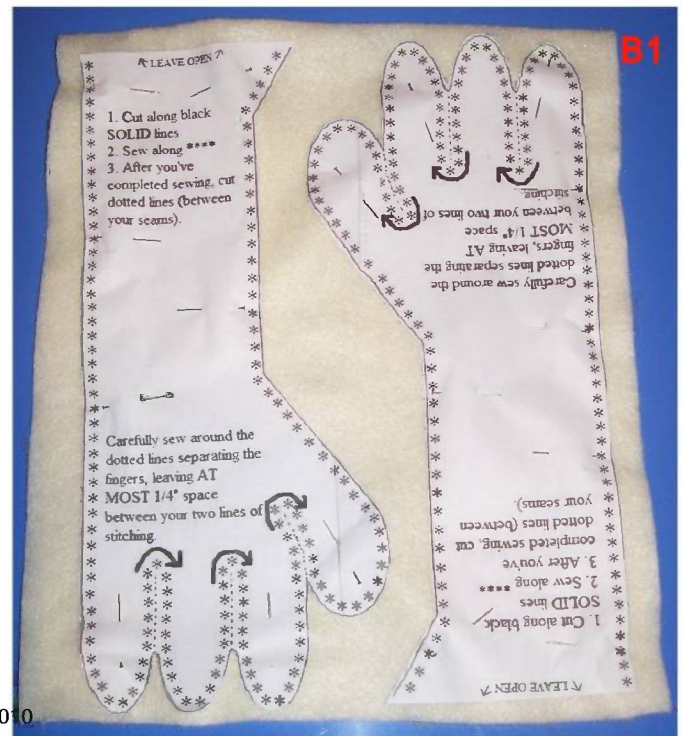
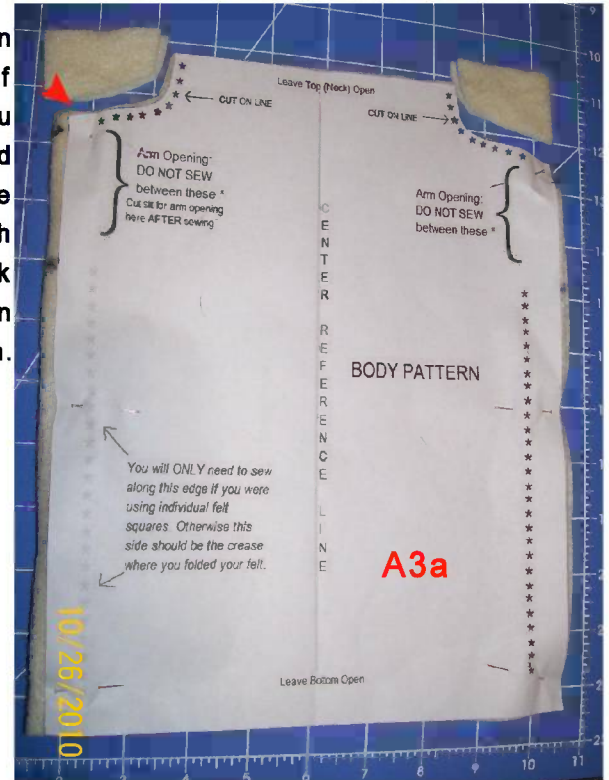
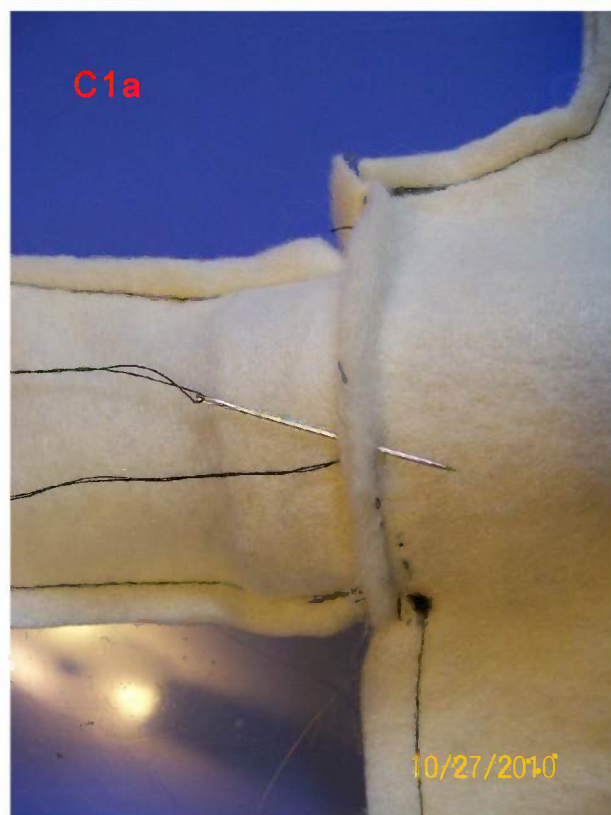
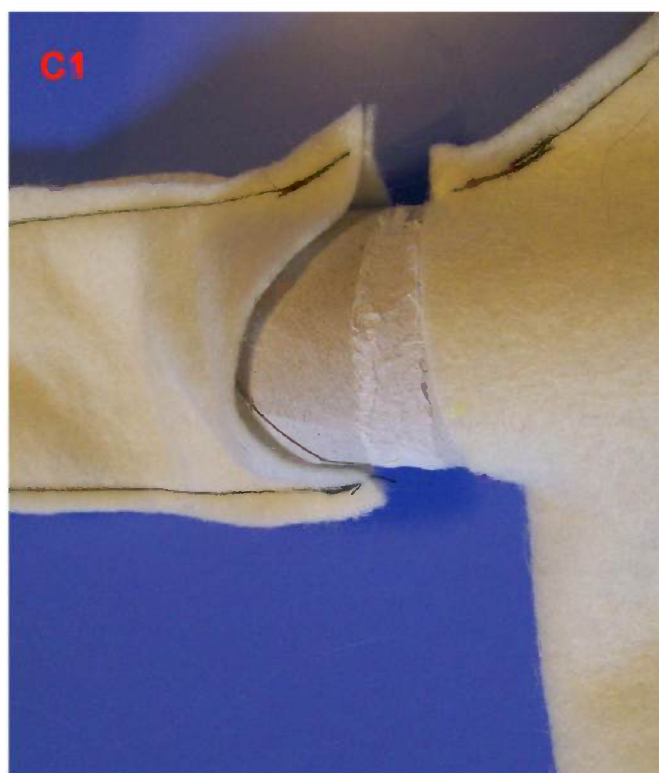
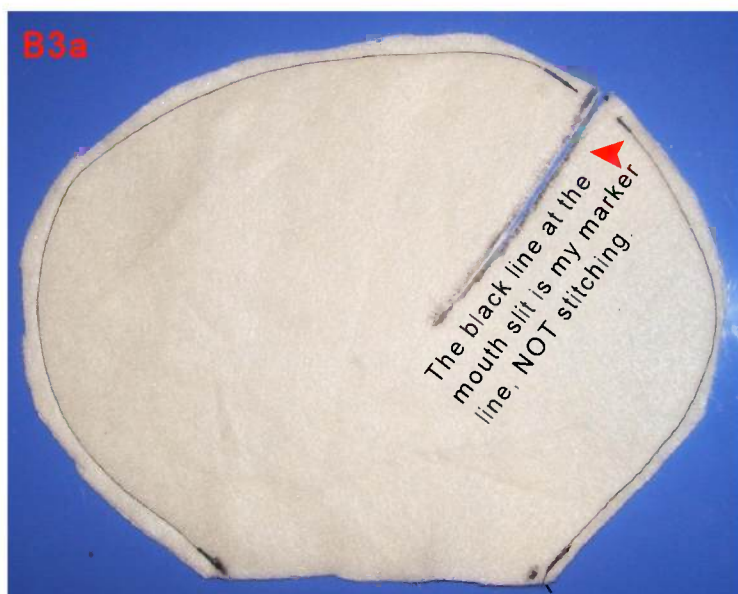
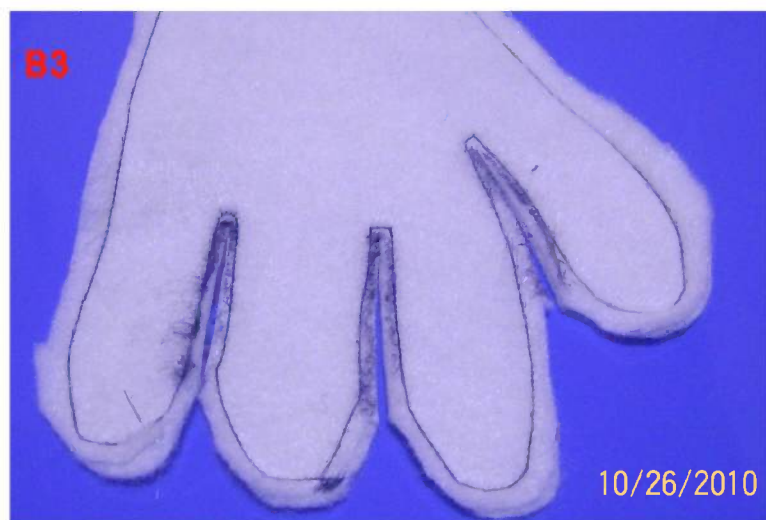
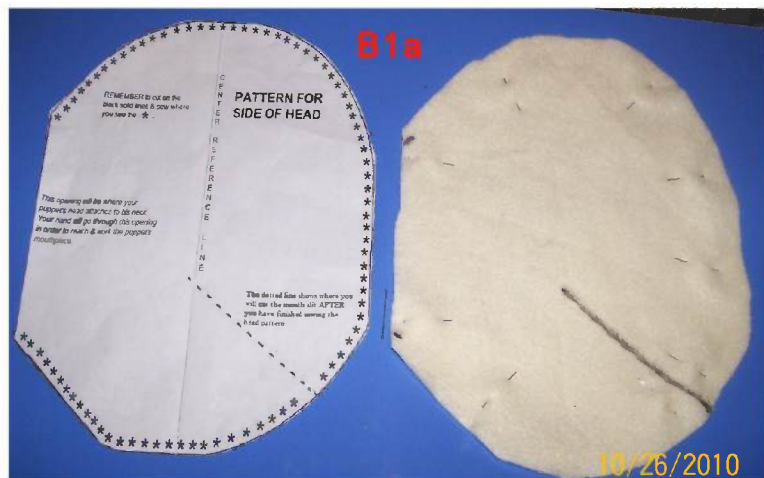
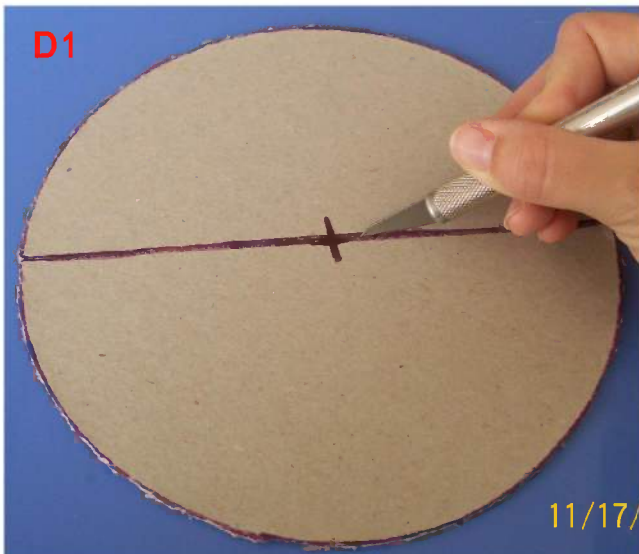
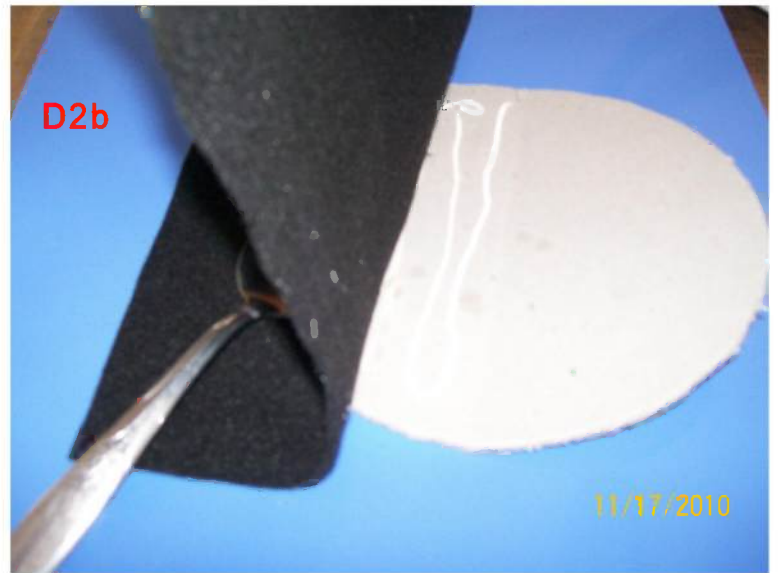
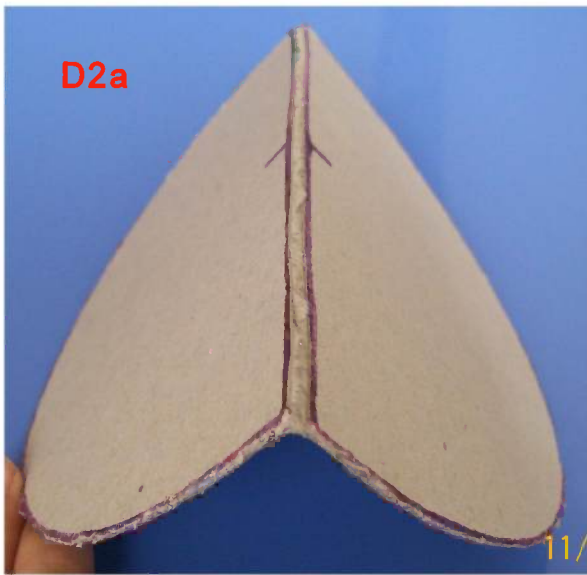


Here is an example of where you should continue cutting through the blank "margin" on the pattern.

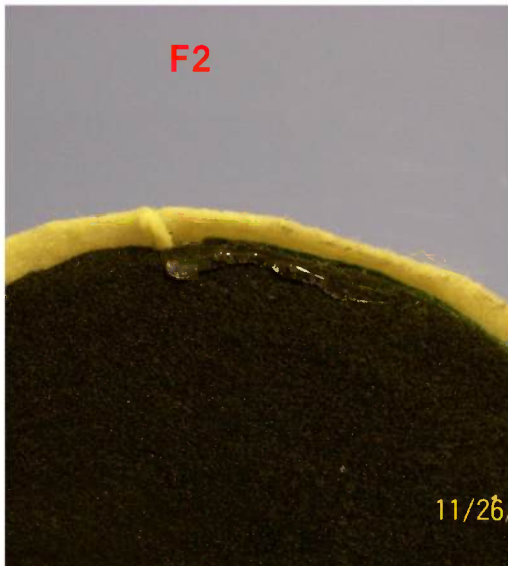
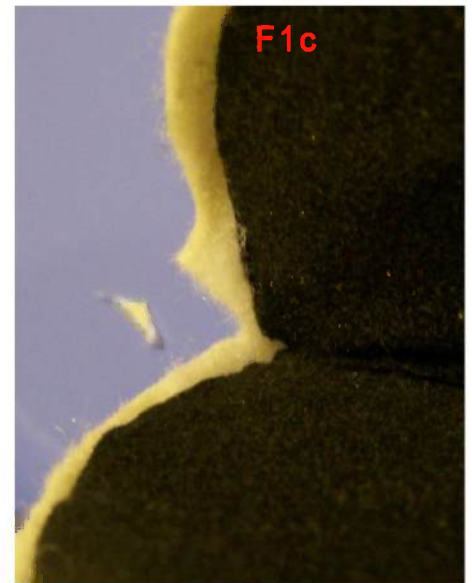
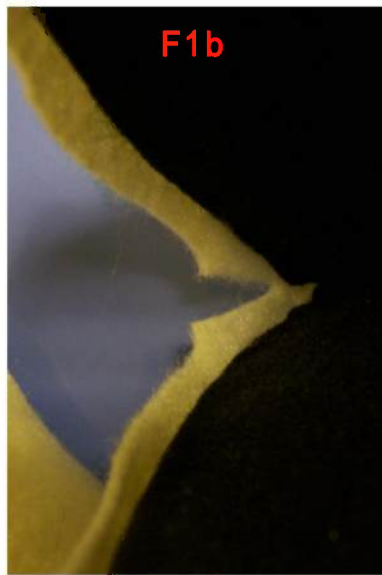
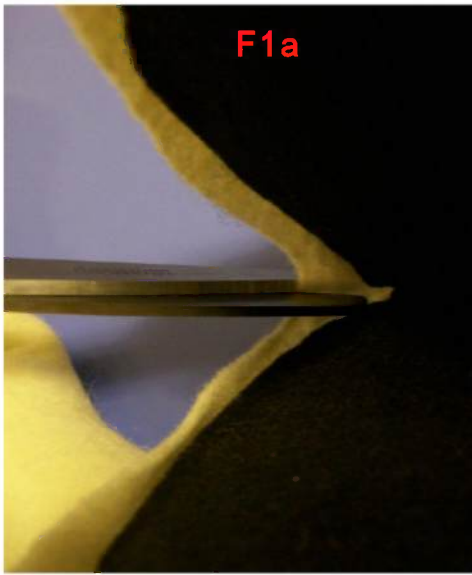




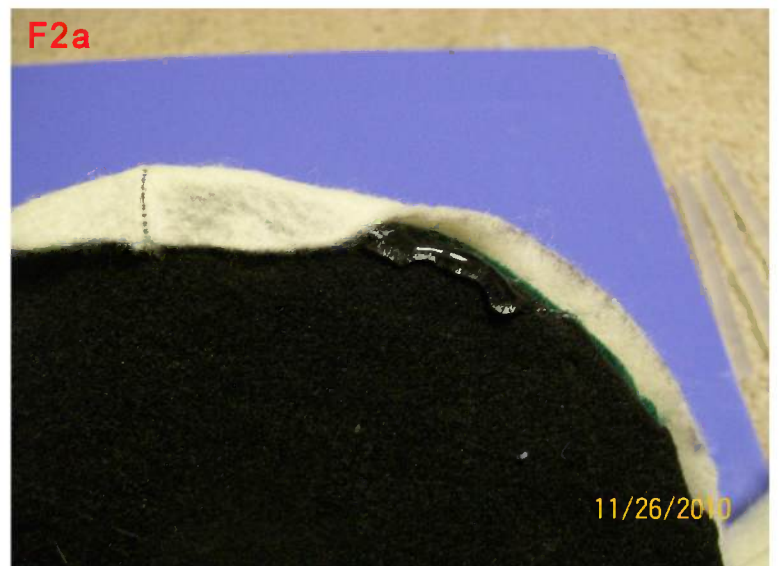


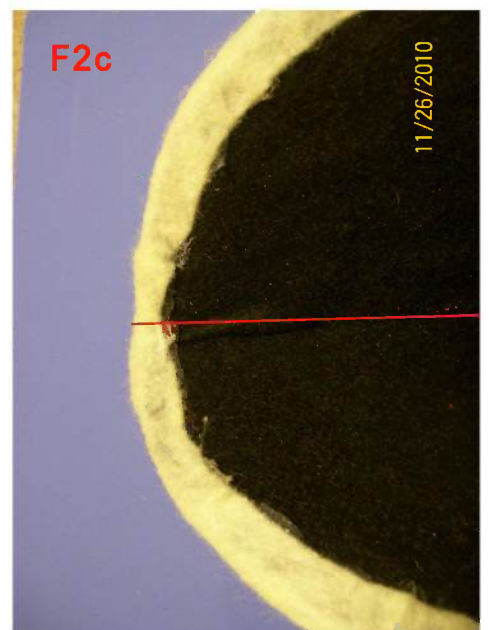


©Heather Jenks 2010

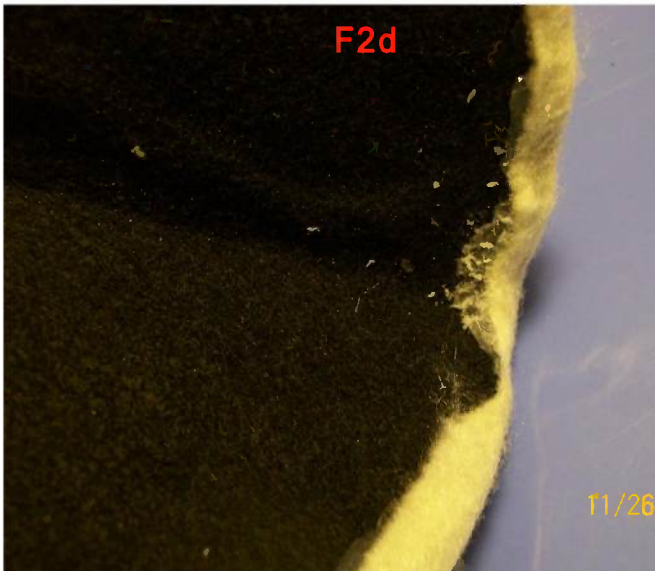


The bit of green felt you can see in these two photos is from the outer side of my mouthpiece. I glued on a contrasting color so that it would be easily identifiable in photos (you should've used felt matching or complimenting the color of your puppet's skin).
©Heather Jenks 2010

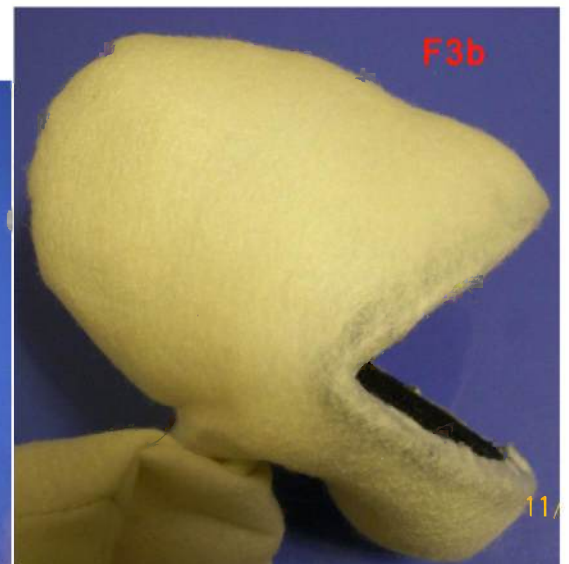
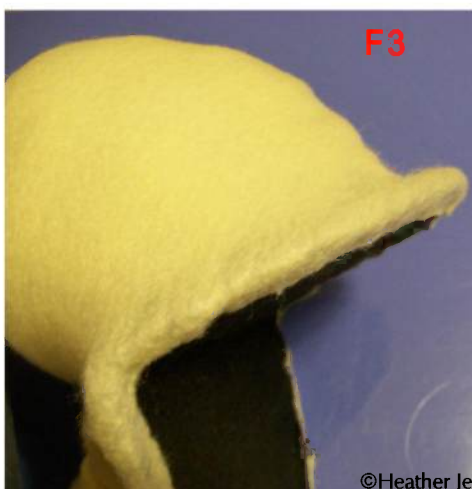
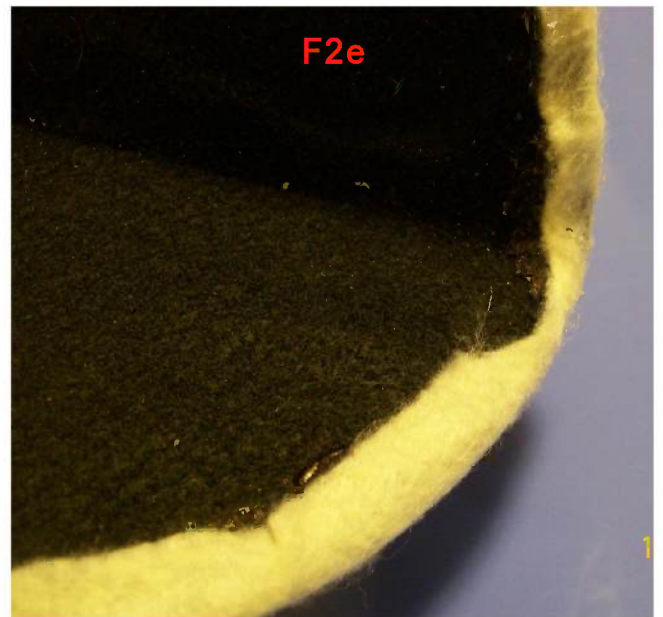




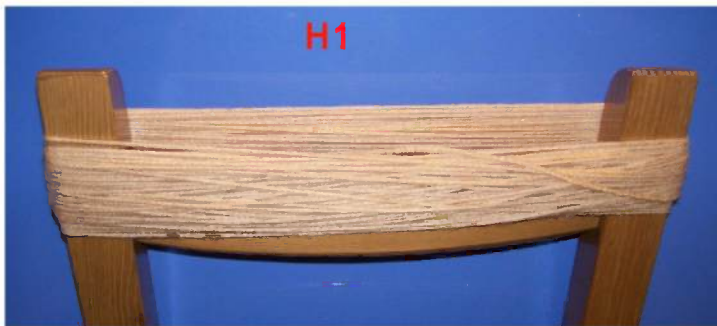
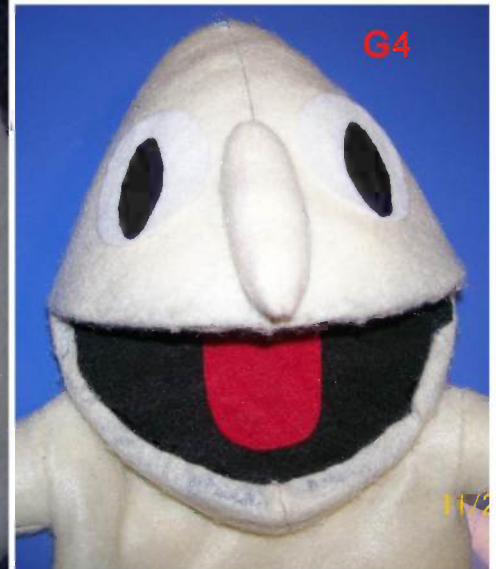
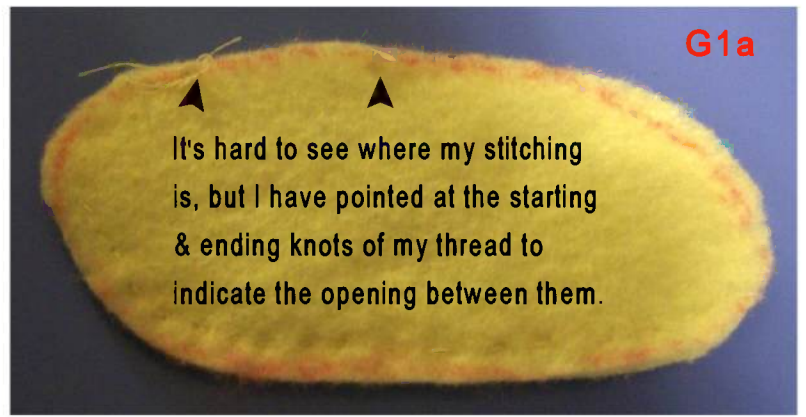
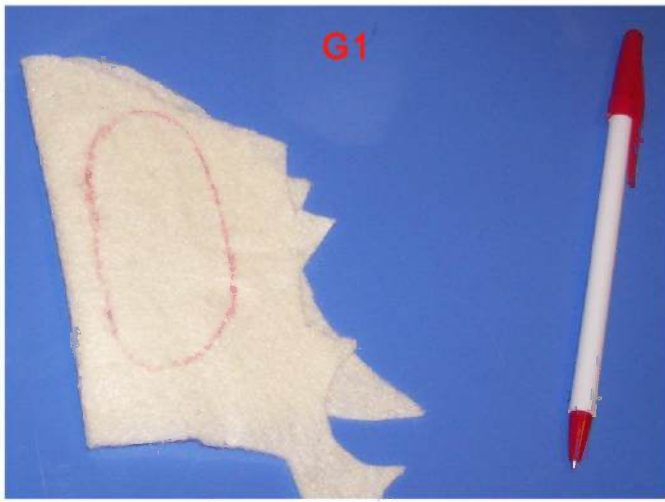
The red line shows where the crease of my puppet's mouthpiece is in this photo. >

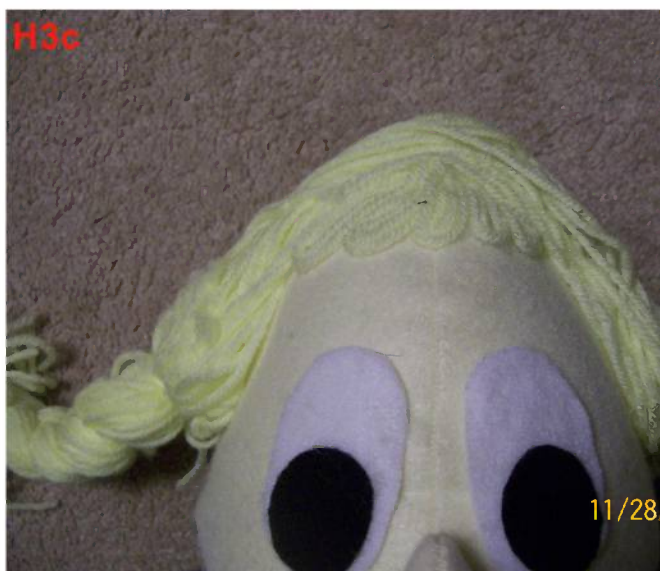
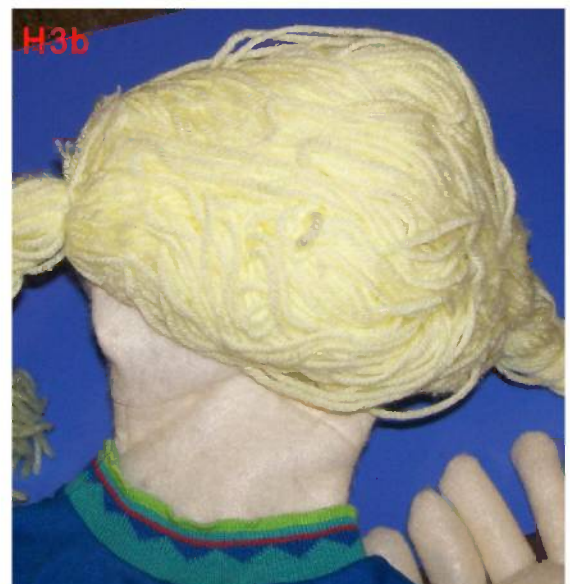


< Before coloring excess glue with black marker and after >

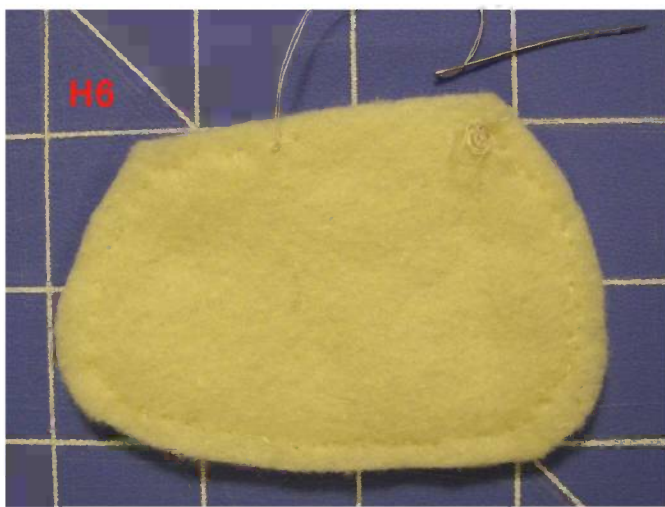


©Heather Jenks 2010





©Heather Jenks 2010



©Heather Jenks 2010



The photo above shows where the hanger should be positioned INSIDE the puppet.



©Heather Jenks 2010